

TFL
The Full Lumen.

LED Solar Street Light
1000lm-3000lm



5 years
warranty

TFL

The Full Lumen. Your new partner in LED lighting

Features

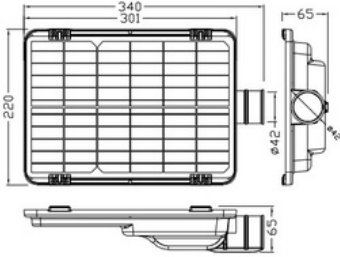
- * Stable Photoelectric Conversion Efficiency
- * Non-Corrosive ADC12 Die Cast Aluminium
- * Duck Grey powder coat finish (std.)
- * Custom and factory select colors available
- * Totally New IFR26650 Lifepo4 Battery Pack
- * Monocrystalline silicon solar panels
- * >70 Color Rendering Index (CRI)
- * L70 50,000Hrs @ 25°C
- * PCB: Metal Core
- * PIR, Microwave sensor
- * Control system with time dimming
- * PWM/MPPT charge controller
- * 5 Year Warranty
- * Operating Temperature: -20°C ~ +50°C
- * IP66 IK08

Specifications

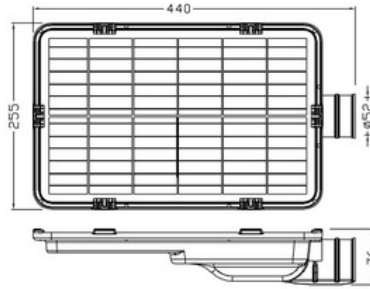
Model	RMS-H21076	RMS-H210712	RMS-H210718
Wattage	6W	12W	18W
Total Lumens	1000lm	2000lm	3000lm
Battery Type & capacity	LiFeO4 Battery 3.2V 10AH 32WH	LiFeO4 Battery 3.2V 15AH 48WH	LiFeO4 Battery 20AH 64WH
Efficiency	170lm/w	170lm/w	170lm/w
Max Power of Solar Panel	6V 10W (Monocrystalline Silicon)	6V 15W (Monocrystalline Silicon)	6V 20W (Monocrystalline Silicon)
LED Chips	High luminous efficiency 3030SMD		
Life Time @Ta25°(Hours)	>50,000		
CCT	2700K ~ 6500K		
CRI	>70		
Life Time of Solar Panel	25 year		
Life Time of Battery	5 year		
Charge Time by Sun	4-5 hrs		
Working Mode	12 hrs with self adaptive dimming mode		
Raining Day	3 - 4 day		
Recommended Mounting Height	4 - 8m		
Recommended Mounting Distance	20 - 35m *Please refer to lighting class requirement.		
Ingress Protection (IP)	IP 66		
Impact Protection	IK 08		
Standard Compliance	CE / ROHS		
Optical System	PC LENS		
Beam Angles	TYPE II		
Housing Material	ADC12 Die-cast Aluminium		
External Screw	#304 Stainless Steel		
Installation	40-42mm side Entry	50mm side Entry	60mm side Entry
Packing	345*225*75mm	445*260*85mm	555*260*96mm

Dimensions

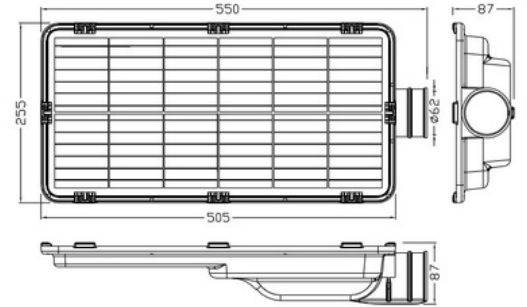
Unit: mm



6W



12W



18W

Details

170LM/W system efficiency

- ◀ Equipped with 3030 super quality LED
- ◀ Optic: TYPE II
- ◀ Super clear glass with 93% transmittance.

Heatsink

- ◀ Non-Corrosive
- ◀ ADC12 Die Cast Aluminium

Solar Panel

- ◀ Monocrystalline
- ◀ Efficiency 17-22% 18V solar panel
- ◀ Charging: >14V
- ◀ Lamp light up: <5V

Switch

- ◀ On/off Switch control

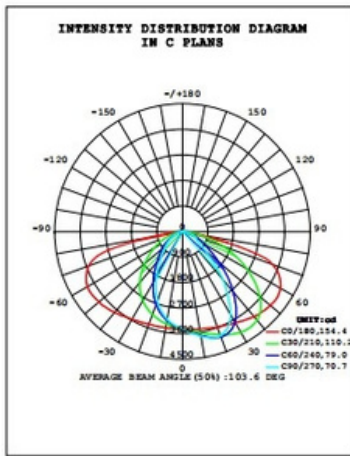
Battery

- ◀ Totally New Lifepo4 (26650)
- ◀ Battery >2000cycles
- ◀ Warranty: 3/5 Years

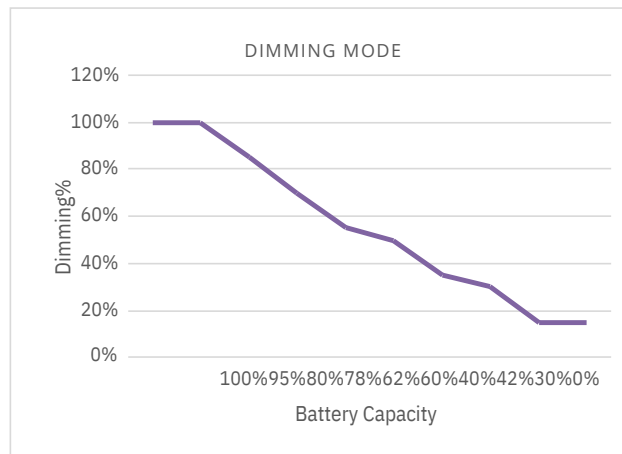


Beam Angle

Type II



Dimming Mode

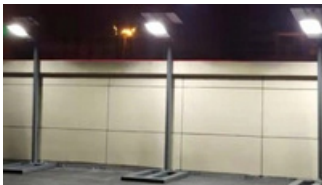


Packing

Model	Wattage	G.W	Carton Size (mm)	QTY/CTN (pcs)	N.W
RMS-H21076	6W	1.23kg	345*225*75mm	1	2.4kg
RMS-H210712	12W	2.3kg	445*260*85mm	1	3.5kg
RMS-H210718	18W	3.5kg	555*260*96mm	1	4.8kg

Application

Widely used for Residential Areas, Roads, Parking Lots, Public squares, Parks, Municipal, Agriculture Lighting, Aquaculture Lighting.



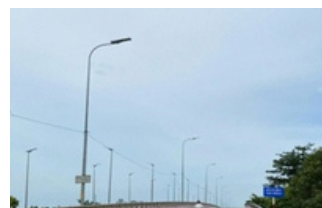
Projects



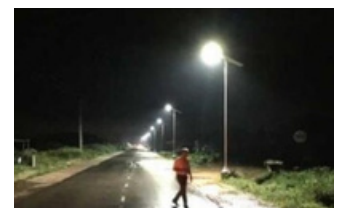
Sri Lanka Solar LED Street Lighting Gargen Project



Namibia Solar LED Street Lighting Roadway Project



Vietnam Solar LED Street Lighting Highway Project



Nigeria Solar LED Street Lighting Roadway Project